

## Mosaic™ Programme mechanisms

### TV/R/SAT sockets



0 787 86

0 787 84

Selection chart for boxes, supports and plates **p. 804-805**

| Pack | Cat.Nos              | Television sockets  |
|------|----------------------|---|
|      |                      | For hertzian and satellite installation (with individual demodulator)<br>DTT and HDTV compatible. Shielded sockets<br>TV: male connector (Ø9.5 mm)<br>R: female connector (Ø9.5 mm)<br>SAT: "F" type connector<br>Recommended coaxial cable: 17/19 VATC |
|      |                      | <b>TV-R-SAT sockets</b><br>TV: 5-68 / 120-862 Mhz<br>R: 87.5-108 Mhz<br>SAT: 950-2400 Mhz<br>Star -1.5 dB. 2 modules  |
| 10   | 0 787 86             | ○ White   |
| 10   | 0 792 96             | ● Alu   |
|      |                      | <b>TV-R sockets</b><br>TV: 5-68 / 120-862 Mhz<br>R: 87.5-108 Mhz<br>2 modules   |
| 10   | 0 787 83             | ○ White. Star -1.5 dB   |
| 10   | 0 787 87             | ○ White. Pass-through -14 dB  |
| 10   | 0 787 88             | ○ White. Terminal -10 dB  |
|      |                      | <b>TV-R socket (cable operator design)</b><br>○ White - 2 modules. Star -1.5 dB   |
| 10   | 0 787 84             |   |
|      |                      | <b>Single male TV sockets - Ø9.52 mm</b><br>TV: 0-2400 Mhz  |
| 5    | <b>N</b><br>0 787 93 | ○ White - 1 module. Star -1.5 dB  |
| 10   | 0 787 82             | ○ White - 2 modules. Star -1.5 dB   |
| 10   | 0 792 92             | ● Alu - 2 modules. Star -1.5 dB   |
| 10   | 6 771 37             | ○ White - 2 modules. Pass-through -14 dB  |
| 10   | 6 771 38             | ○ White - 2 modules. Terminal -10 dB  |
|      |                      | <b>"F" type TV socket – with screws</b><br>SAT: 0-2400 Mhz  |
| 10   | 0 787 80             | ○ White - 2 modules. Star - 1.5 dB  |

## Mosaic™ Programme mechanisms

### audio sockets



0 787 55

0 787 60

0 787 50

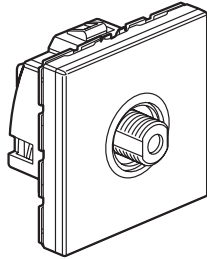
0 787 76

Selection chart for boxes, supports and plates **p. 804-805**

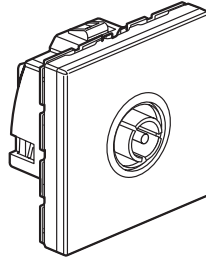
| Pack | Cat.Nos  | Audio sockets  |
|------|----------|--|
|      |          | <b>XLR 3-pin - 2 modules</b><br>Provide the stereo link for microphone, amplifier, mixing console, etc.<br>Recommended cable: 1 audio pair 0.14 mm <sup>2</sup> to 0.5 mm <sup>2</sup> shielded<br>Max. cable length: 50 m (without amplifier) |
| 1    | 0 787 55 | ○ White - fast screw connection female   |
| 1    | 0 792 55 | ● Alu - fast screw connection female   |
| 1    | 0 787 56 | ○ White - fast screw connection male   |
|      |          | <b>4-pole Speakon – 2 modules</b><br>Used to connect power enclosures<br>Recommended cable: 2 audio pairs 4 mm <sup>2</sup><br>Max. cable length: 50 m (without amplifier)   |
| 1    | 0 787 60 | ○ White - fast screw connection female   |
|      |          | <b>Loudspeakers sockets</b><br>Terminal 4 mm <sup>2</sup>  |
| 10   | 0 787 51 | ○ White - 2 modules  |
| 10   | 0 787 50 | ○ White - 1 module   |
| 10   | 0 792 50 | ● Alu - 1 module   |
|      |          | <b>100 V Line Volume Attenuator – 2 modules</b><br>Allows to adjust power and volume of a 100 V loudspeaker line   |
| 1    | 0 787 76 | ○ White - 100 V - 25 W   |

**Mosaic™**  
**Single TV socket outlets**

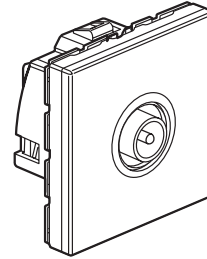
Cat. No.(s): 787 80/81/82 - 792 92



787 80



787 81



787 82

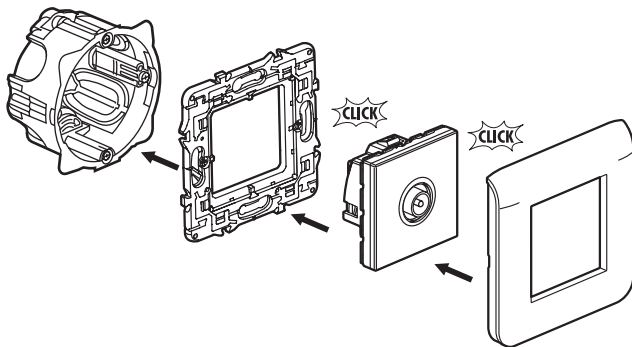
**1. GENERAL CHARACTERISTICS**

TV sockets, 860 Mhz, for individual or collective installation with reception via:

- radio relay antenna
- cable network
- collective head-end station in variable sideband amplitude modulation

|  | Cat. No. | Designation                                       | No of modules | Weight (g) |
|--|----------|---|---------------|------------|
|  | 787 80   | Single TV socket, F plug                          | 2             | 53         |
|  | 787 81   | Single TV socket, 9.52 female                     | 2             | 53         |
|  | 787 82   | Single TV socket, 9.52 male<br>White cover plate  | 2             | 45.7       |
|  | 792 92   | Single TV socket, 9.52 male<br>Cover plate in alu | 2             | 45.7       |

**2. RANGE**



**3. MOUNTING**

Flush-mounting mechanisms using adapter Cat. No. 80299 (2 modules).  
The mechanisms can be mounted on thin walls using adapter Cat. No. 80291 (2 modules).  
The mechanisms can be flush-mounted or surface-mounted.

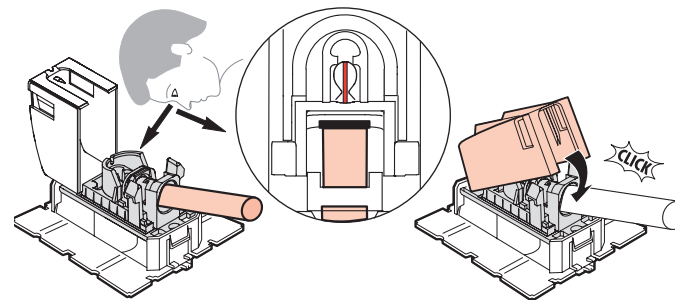
**4. TECHNICAL CHARACTERISTICS**

- TV connector, male Ø 9.52 mm conform to IEC 169-2
- FM connector, female Ø 9.52 mm conform to IEC 169-2
- Frequency bands  
TV 5-68 120-862 Mhz  
FM 87.5-108 Mhz
- Characteristic impedance 75 Ω
- Return voice on TV connector
- Shielding attenuation  
UHF > 65 dB  
VHF > 75 dB
- Max. incoming cable Ø on input 7 mm

**3.1 Material characteristics**

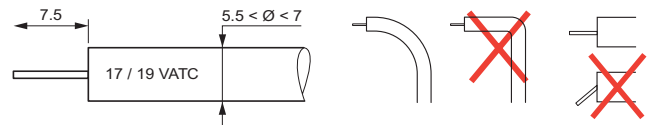
Cover plate in ABS IK03

**5. CONNECTION**



**6. CABLING PRECAUTIONS**

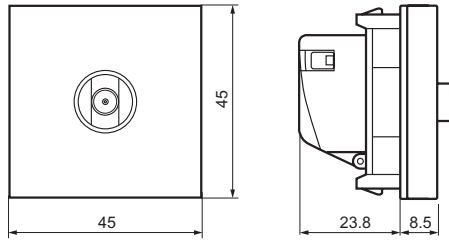
Stripping length



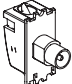


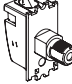
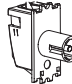

Make sure the coaxial cable has the largest possible bend radius to prevent impedance breakage and a resulting deterioration in performance due to deformation of this coaxial cable.  
 A signal amplifier must be used with passage and terminal sockets to compensate for attenuations generated by this technique.

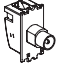





# Single TV socket outlets

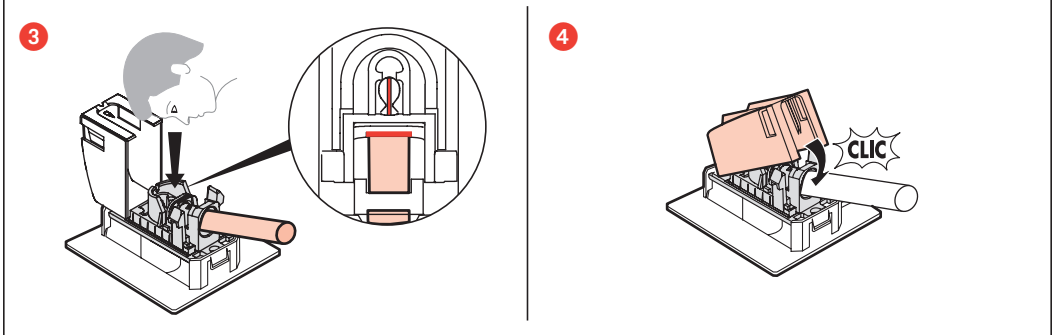
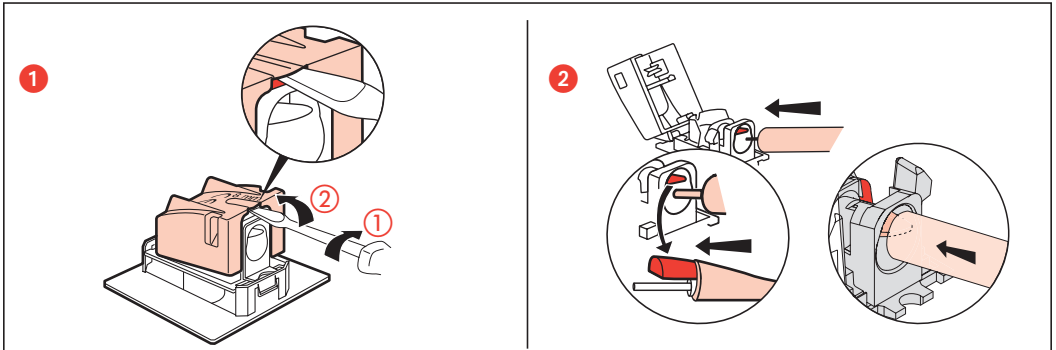
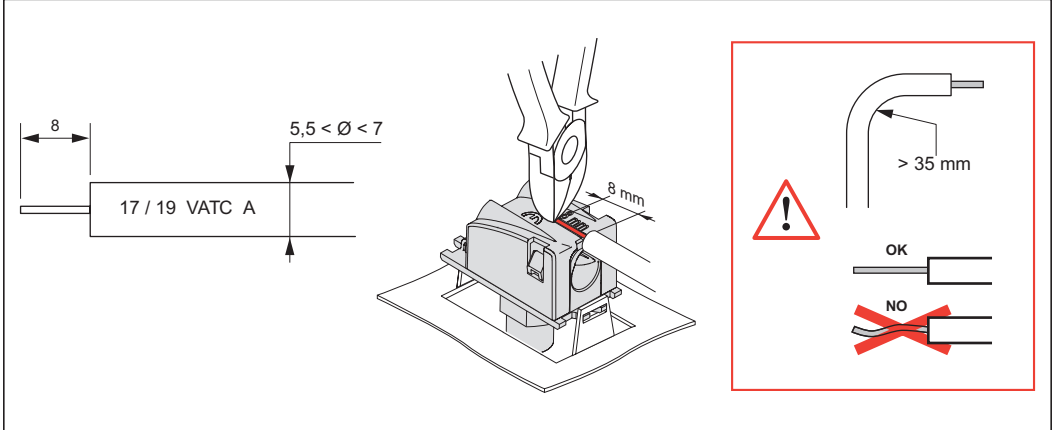
## 7. OVERALL DIMENSIONS



## 8. PERFORMANCES

|   |  |  |   |          |           |            |             |             |                  |
|---|--|--|---|----------|-----------|------------|-------------|-------------|------------------|
| <br><b>787 82</b><br><b>792 92</b> | Coax   | <br>Attenuation | <br>500 mA | Control  | Channel 1 | Channel RD | Channel VHF | Channel UHF | Channel SAT (IF) |
|   | Z = 75 Ω   |  | —   | 22 / 0.6 | 47 - 68   | 87.5 - 108 | 120 - 470   | 470 - 862   | 950 - 2400       |
| <br><b>787 80</b>                  |  | dB   | mA  | KHz / V  | MHz       | MHz        | MHz         | MHz         | MHz              |
| <br><b>787 81</b>                  | <br>TV | i < 1.5 dB   |   |          |           |            |             |             |                  |

|  |                        |   |   |                 |                         |                     |                       |                         |                         |                                   |
|--|------------------------|---|---|-----------------|-------------------------|---------------------|-----------------------|-------------------------|-------------------------|-----------------------------------|
| <br>6 781 30<br>0 673 82<br>0 787 82<br>0 787 93<br>0 792 92 | Coax<br>الكابل المحوري |  |  | Control<br>تحكم | Return Path<br>وصل رجعي | Channel 1<br>قناة 1 | Channel FM<br>قناة FM | Channel VHF<br>قناة VHF | Channel UHF<br>قناة UHF | Channel SAT (IF)<br>قناة SAT (IF) |
|  | Z                      |  | —   |                 |                         |                     |                       |                         |                         |                                   |
| <br>0 673 80<br>0 787 80                                     | 75                     | < 1,5   | 500   | 22 / 0.6        | 4 - 30                  | 47 - 68             | 87.5 - 108            | 120 - 470               | 470 - 862               | 950 - 2400                        |
|  | Ω                      | dB  | mA  | kHz / V         | MHz                     | MHz                 | MHz                   | MHz                     | MHz                     | MHz                               |
| <br>0 787 81<br>0 673 81                                     |                        |   |   |                 |                         |                     |                       |                         |                         |                                   |



## ⚠️ Consignes de sécurité

(FR LU BE CH)

Ce produit doit être installé conformément aux règles d'installation et de préférence par un électricien qualifié. Une installation et une utilisation incorrectes peuvent entraîner des risques de choc électrique ou d'incendie. Avant d'effectuer l'installation, lire la notice, tenir compte du lieu de montage spécifique au produit.

Ne pas ouvrir, démonter, altérer ou modifier l'appareil sauf mention particulière indiquée dans la notice. Tous les produits Legrand doivent exclusivement être ouverts et réparés par du personnel formé et habilité par Legrand. Toute ouverture ou réparation non autorisée annule l'intégralité des responsabilités, droits à remplacement et garanties.

Utiliser exclusivement les accessoires de la marque Legrand.

## ⚠️ Veiligheidsvoorschriften

(NL BE)

Dit product moet in overeenstemming met de installatievoorschriften en bij voorkeur door een vakbekwame elektricien worden geïnstalleerd. Bij een onjuiste installatie en een onjuist gebruik bestaat het risico van elektrische schokken of brand.

Lees alvorens de installatie uit te voeren de handleiding door en houd rekening met de specifieke montageplaats van het product.

U mag het apparaat niet openen, demonteren of wijzigen, tenzij dat specifiek in de handleiding wordt vermeld. Alle Legrand-producten mogen uitsluitend worden geopend en gerepareerd door personeel dat door Legrand is opgeleid en bevoegd verklaard. In geval van ongeoorloofd openen of repareren wordt geen enkele aansprakelijkheid aanvaard, vervalt het recht op vervanging en zijn de garanties niet meer geldig.

Gebruik uitsluitend accessoires van het merk Legrand.

## ⚠️ Safety instructions

(GB IE)

This product should be installed in line with installation rules, preferably by a qualified electrician. Incorrect installation and use can lead to risk of electric shock or fire.

Before carrying out the installation, read the instructions and take account of the product's specific mounting location.

Do not open up, dismantle, alter or modify the device except where specifically required to do so by the instructions. All Legrand products must be opened and repaired exclusively by personnel trained and approved by Legrand. Any unauthorised opening or repair completely cancels all liabilities and the rights to replacement and guarantees. Use only Legrand brand accessories.

## ⚠️ Sicherheitshinweise

(DE AT LI CH)

Dieses Produkt darf nur durch eine Elektro-Fachkraft eingebaut werden. Bei falschem Einbau bzw. Umgang besteht das Risiko eines elektrischen Schlages oder Brandes.

Vor der Installation die Anleitung lesen, den produktspezifischen Montageort beachten.

Das Gerät vorbehaltlich besonderer, in der Betriebsanleitung angegebener Hinweise nicht öffnen, zerlegen, beschädigen oder abändern. Alle Produkte von Legrand dürfen ausschließlich von durch Legrand geschultes und anerkanntes Personal geöffnet und repariert werden. Durch unbefugte Öffnung oder Reparatur erlöschen alle Haftungs-, Ersatz- und Gewährleistungsansprüche. Ausschliesslich Zubehör der Marke Legrand benutzen.

## ⚠️ Consignas de seguridad

(ES)

Este producto debe instalarse conforme a las normas de instalación y preferiblemente por un electricista cualificado. Una instalación y una utilización incorrectas pueden entrañar riesgos de choque eléctrico o de incendio. Antes de efectuar la instalación, leer las instrucciones, tener en cuenta el lugar de montaje específico del producto.

No abrir, desmontar, alterar o modificar el aparato salvo que esto se indique específicamente en las instrucciones. Todos los productos Legrand deben ser abiertos y reparados exclusivamente por personal formado y habilitado por Legrand. Cualquier apertura o reparación no autorizada anula la totalidad de las responsabilidades, derechos a sustitución y garantías.

Utilizar exclusivamente los accesorios de la marca Legrand.

## ⚠️ Instruções de segurança

(PT)

Este produto deve ser instalado de acordo com as regras de instalação e de preferência por um electricista qualificado. A instalação e o uso incorrectos podem provocar riscos de choque eléctrico ou de incêndio.

Antes de efectuar a instalação, ler as instruções e ter em conta a localização adequada para a montagem do produto.

Não abrir, desmontar, alterar ou modificar o aparelho salvo especificação em contrário nas instruções do produto. Todos os produtos Legrand só devem ser abertos e reparados exclusivamente por pessoal formado e autorizado pela Legrand. Qualquer abertura ou reparação não autorizada cancela todas as responsabilidades, direitos de substituição e garantias. Utilizar exclusivamente os acessórios da marca Legrand.

## ⚠️ Συστάσεις ασφαλείας

(GR CY)

Το προϊόν αυτό πρέπει να εγκατασταθεί σύμφωνα με τις οδηγίες εγκατάστασης και κατά προτίμηση από ειδικευμένο ηλεκτρολόγο. Η λανθασμένη εγκατάσταση και χρήση μπορούν να προκαλέσουν κίνδυνο ηλεκτροπληξίας ή πυρκαγιάς.

Πριν πραγματοποιήσετε την εγκατάσταση, διαβάστε τις οδηγίες λαμβάνοντας υπόψη τον χώρο τοποθέτησης του προϊόντος.

Μην ανοίγετε, αποσυναρμολογείτε, τροποποιείτε ή επεμβαίνετε στο προϊόν εκτός κι αν υπάρχουν σαφείς σχετικές οδηγίες στο εγχειρίδιο. Όλα τα προϊόντα της Legrand πρέπει να ανοίγονται και να επισκευάζονται αποκλειστικά από εκπαιδευμένο και εξουσιοδοτημένο από τη Legrand προσωπικό. Οποιαδήποτε επέμβαση ή επιδιόρθωση πραγματοποιηθεί χωρίς άδεια, ακυρώνει το σύνολο των ευθυνών, δικαιωμάτων αντικατάστασης και εγγυήσεων.

Να χρησιμοποιείτε αποκλειστικά εξαρτήματα επωνυμίας Legrand.

## ⚠️ Меры предосторожности

(RU)

Установка данного изделия должна выполняться в соответствии с правилами монтажа и предпочтительно квалифицированным электриком. Неправильный монтаж или нарушение правил эксплуатации изделия могут привести к возникновению пожара или поражению электрическим током.

Перед монтажом необходимо внимательно ознакомиться с данной инструкцией, а также принять во внимание требования к месту установки изделия. Запрещается вскрывать корпус изделия, а также разбирать, выводить из строя или модифицировать изделие, кроме случаев, оговоренных в инструкции. Вскрытие и ремонт изделий марки Legrand могут выполняться только специалистами, обученными и допущенными к таким работам компанией «ЛЕГРАН». Несанкционированное вскрытие или выполнение ремонтных работ посторонними лицами лишает законной силы любые требования об ответственности, замене или гарантийном обслуживании.

При ремонте или гарантийном обслуживании использовать только запасные части марки Legrand.

## ⚠️ Güvenlik talimatları

(TR CY)

Bu ürün montaj kurallarına uygun olarak ve tercihen yetkili bir elektrikli tarafından gerçekleştirilmelidir. Hatalı bir yerleştirmeye ve kullanımı, elektrik çarpmasına veya yangına neden olabilir. Yerleştirmeden önce, talimatları okuyun ve ürüne özgü montaj yerine dikkat ediniz. Kilavuzda aksi belirtilmediği sürece cihazı açmayın, sökmevin veya üzerine değişiklik yapmayın. Tüm Legrand ürünlerinin yalnız Legrand tarafından eğitilmiş ve yetkilendirilmiş personel tarafından açılması ve tamir edilmesi gerekir. İzin verilmeyen herhangi bir açılıma veya tamir, tüm sorumlulukları, değiştirme haklarını ve garantileri iptal eder.

Yalnızca Legrand marka aksesuarları kullanın.

## ⚠️ إرشادات الأمان:

ركب ويفضل أن يقوم بالتركيب كهربائي مؤهل. فقد يؤدي التركيب والاستخدام غير الصحيح إلى مخاطر التعرض لصدمة كهربائية أو نشوب حريق. اقرأ النشرة قبل التركيب، وأقرء مكاناً لتركيب المنتج خاصاً به. لا تقنن أو تفك أو تعدل أو تحوّل المنتج ما لم يُشر إليك ذلك بشكل محدد في النشرة. فكل منتجات Legrand يجب فتحها وإصلاحها حصراً من قِبل فنيين مرربين ومؤهلين لدى Legrand. وكل فتح أو إصلاح غير مسموح به يبطل المسؤوليات وحقوق الاستبدال والضمانات. لا تستخدم سوى إكسسوارات من علامة Legrand حصراً.