

Mosaic™ Programme mechanisms

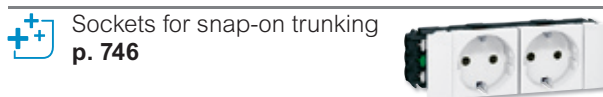
multi-support single and multiple sockets: German standard



Selection chart for boxes, supports and plates **p. 804-805**

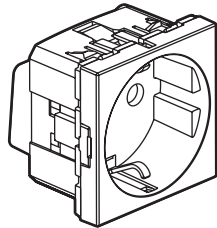
Pack	Cat.Nos	Multi-support single sockets - German standard
		For installation in flush-mounting box, surface-mounting box, floor box, column module, desktop multi-outlet extension, office module and trunking 2 modules
10	0 772 11	2P+E with shutters for child protection ○ White - automatic terminals ○ White - with special tap-off screw and 4 mm ² screw terminals
10	0 772 13	
10	0 772 18	 ● Red - automatic terminals ○ White antimicrobial - screw terminals ● Green antimicrobial - automatic terminals ● Orange antimicrobial - automatic terminals ● Red antimicrobial - screw terminals
10	0 792 13	
10	0 787 02	
10	0 772 16	
10	0 772 17	
10	0 772 20	
10	0 772 10	
10	0 772 45	2P+E angled 45° ○ White - automatic terminals
10	0 772 14	2P+E tamperproof ● Red - screw terminals To be used with the tamperproof insert Cat.No 0 502 99
1	0 772 31	2P+E "Access Design" Special for disabled persons Simple action on the lever allows easy plug-in or unplug ○ White antimicrobial
10	0 772 19	2P+E with cover ○ White antimicrobial - automatic terminals
10	0 772 12	2P+E with indicator ○ White antimicrobial - automatic terminals Indicator 230 V - 2.4 mA supplied

Pack	Cat.Nos	Multi-support multiple sockets - German standard
		For installation in flush-mounting box, surface-mounting box, floor box, column module, desktop multi-outlet extension and office module Inclined 45° Connection by automatic terminals
10	0 772 52	2 x 2P+E ○ White ○ White - with indicator 230 V - 2.4 mA (supplied) ● Alu ● Red ● Red - with indicator 230 V - 2.4 mA (supplied) ● Red - tamperproof. To be used with tamperproof insert Cat.No 0 502 99 ● Red - tamperproof, with indicator 230 V - 2.4 mA (supplied). To be used with tamperproof insert Cat.No 0 502 99
10	0 772 90	
10	0 792 82	3 x 2P+E ○ White ● Alu ● Red ● Red - tamperproof. To be used with tamperproof insert Cat.No 0 502 99
10	0 772 72	
10	0 772 91	
10	0 772 73	
5	0 772 54	4 x 2P+E ○ White ● Red ● Red - tamperproof. To be used with tamperproof insert Cat.No 0 502 99
5	0 772 83	
5	0 772 74	
10	0 502 99	Tamperproof insert Tamperproof insert for socket Fits directly into the plug

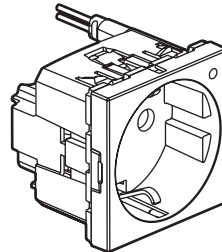


Mosaic™ Socket outlets - German standard

Cat. No(s): 0 771 50 - 0 772 12/13/14/16/17/18/19/20/45
 0 787 02 - 0 792 13



0 787 02



0 772 12

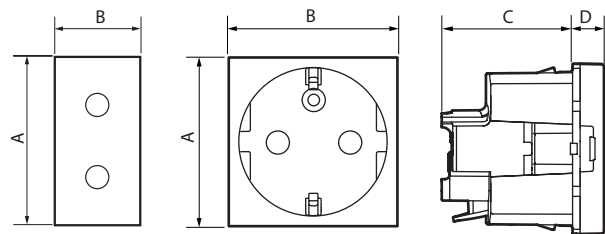
1. USE

Multi-support single socket outlets 16 A - 250 V~.
 Flush or surface-mounting.

2. RANGE

	Description	References
	2 P ELV socket Franco-belgian and german standards White antimicrobial - 1 module	0 771 50
	2 P+E socket Green antimicrobial - 2 modules	0 772 16
	2 P+E socket Orange antimicrobial - 2 modules	0 772 17
	2 P+E socket Flap cover plate White antimicrobial - 2 modules	0 772 19
	2 P+E socket Red antimicrobial - 2 modules	0 772 20
	2 P+E socket White antimicrobial - 2 modules	0 787 02
	2 P+E socket with indicator White antimicrobial - 2 modules	0 772 12
	Description	References
	2 P+E socket special 4 mm ² and tapping White - 2 modules	0 772 13
	2 P+E socket special 4 mm ² and tapping Aluminium - 2 modules	0 792 13
	2 P+E socket tamperproof Red - 2 modules	0 772 14
	2 P+E socket Red - 2 modules	0 772 18
	2 P+E socket, 45° inclined White - 2 modules	0 772 45

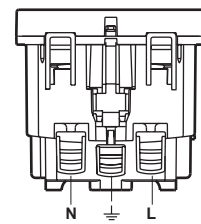
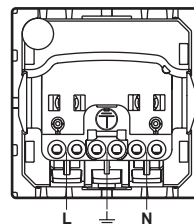
3. OVERALL DIMENSIONS (mm)



References	A	B	C	D
0 772 20 - 0 787 02	45	45	29.5	8.5
0 772 12/16/17/19	45	45	34.5	8.5
0 771 50	44	22.5	29.5	8.5
0 772 13 - 0 792 13	45	45	31	8.5
0 772 14	45	45	31.5	8.5
0 772 18 - 0 772 45	45	45	34.5	8.5

4. CONNECTION

Terminal type	Terminal capacity	Stripped length	Screwdriver
Automatic	2 x 2.5 mm ²	13 mm	-
Whith screws 0 772 13/14/20 0 792 13	2 x 4 mm ²	10 mm	Flat 4 mm PZ2



5. TECHNICAL CHARACTERISTICS

■ 5.1 Mechanical characteristics

- Impact resistance: IK 04
- Penetration against solid bodies and liquids: IP 20

■ 5.2 Material characteristics

- Base: Polycarbonate
- Cover plate: Polycarbonate (RAL 9003) + antimicrobial surface treatment for antimicrobial sockets.
- Halogen-free
- UV resistant
- Self-extinguishing:
 - + 850°C/30 s for insulating parts holding live parts in place
 - + 650°C/30 s for the other insulating part

Antimicrobial socket outlets:

Products are made of silver-ion based, antimicrobial material.

	Reduction factor
Aspergillus niger	Log 0
Bacillus cereus	Log 0.05
Bacillus subtilis	Log 0.09
Candida albicans	Log 0.86
Enterovirus Polio 1	Log 1
Escherichia Coli	Log 6.3
Myobacterium Avium	Log 0.04
Myobacterium Terrae	Log 1.21
Pseudomonas aeruginosa	Log 4.4
Staphylococcus aureus	Log 2.67

(NB: log 4 = 99.99% ; log 3 = 99.9% ; log 2 = 99% ; log 1 = 90%)

Tests carried out in accordance with standards JIS Z 2801: 2000
and JIS Z 2801: 2006

Test report available on request.

■ 5.3 Electrical characteristics

Voltage: 250 V~
Current: 16 A

■ 5.4 Climatic characteristics

Storage temperature: - 10°C to + 70°C
Operating temperature: - 5°C to + 50°C

6. CLEANING

Clean the surface with a cloth.

Do not use acetone, tar-removing cleaning agents or trichloroethylene.

■ 6.1 Resistance to cleaning products

Resistant to the following products: hexane (NF C 61-314), methylated spirit, soapy water, diluted ammonia, bleach diluted to 10%, window-cleaning products, pre-impregnated wipes.

■ 6.2 Resistance to hospital grade cleaning products

Resistant to the following products: Anios, Surfanios, Bactily sine, diluted hydrogen peroxide (35%).

Caution: Always test before using other special cleaning products.

7. ACCESSORIES

Bulbs for sockets with indicator.

Socket	White wired bulbs (wire length = 100 mm)
0 772 12	0 676 64 (230 V - 2.4 mA)

8. STANDARDS AND APPROVALS

Comply with installation and manufacturing standards.
See e-catalogue.