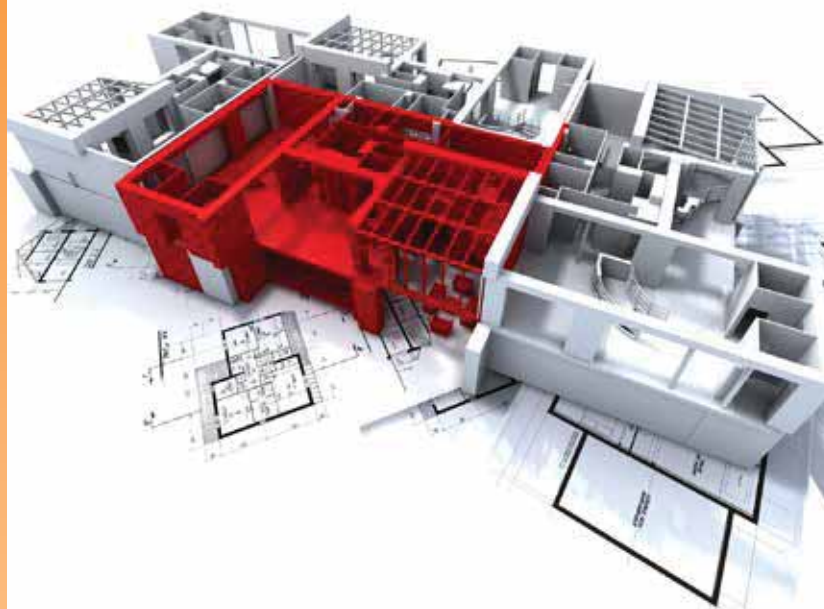


VISAGE FUSE BOXES



You are safe
with its fireproof
and durable
construction...



FLUSH MOUNT FUSE BOXES

| Reference No | Product Name |
|--|---|
| Flush Mount Fuse Boxes | |
| 01 33 00 00 000 006 | Flush Mount Fuse Box with 6 Electric Terminals |
| 01 33 00 00 000 009 | Flush Mount Fuse Box with 9 Electric Terminals |
| 01 33 00 00 000 012 | Flush Mount Fuse Box with 12 Electric Terminals |
| 01 33 00 00 000 016 | Flush Mount Fuse Box with 16 Electric Terminals |
| 01 33 00 00 042 016 | F.M. Fuse Box with 16 Electric Terminals (Double Layered) |
| 01 33 00 00 000 024 | Flush Mount Fuse Box with 24 Electric Terminals |
| 01 33 00 00 043 036 | F.M. Fuse Box with 36 Electric Terminals (Triple Layered) |
| Fuse Boxes - Halogen Free (H.F) Flush Mount | |
| 01 35 00 00 000 006 | Flush Mount Fuse Box with 6 H.F |
| 01 35 00 00 000 009 | Flush Mount Fuse Box with 9 H.F |
| 01 35 00 00 000 012 | Flush Mount Fuse Box with 12 H.F |
| 01 35 00 00 000 016 | Flush Mount Fuse Box with 16 H.F |
| 01 35 00 00 042 016 | Flush Mount Fuse Box with 16 H.F (Double Layered) |
| 01 35 00 00 000 024 | Flush Mount Fuse Box with 24 H.F |
| 01 35 00 00 043 036 | Flush Mount Fuse Box with 36 H.F (Triple Layered) |



SURFACE MOUNT FUSE BOXES

| | |
|--|--|
| Surface Mount Fuse Boxes | |
| 01 34 00 00 000 002 | Surface Mount Fuse Box with 2 Seals |
| 01 34 00 00 000 006 | Surface Mount Fuse Box with 6 Electric Terminals |
| 01 34 00 00 000 009 | Surface Mount Fuse Box with 9 Electric Terminals |
| 01 34 00 00 000 012 | Surface Mount Fuse Box with 12 Electric Terminals |
| 01 34 00 00 000 016 | Surface Mount Fuse Box with 16 Electric Terminals |
| 01 34 00 00 042 016 | S. M. Fuse Box with 16 Electric Terminals (Double Layered) |
| 01 34 00 00 000 024 | Surface Mount Fuse Box with 24 Electric Terminals |
| 01 34 00 00 043 036 | S. M. Fuse Box with 36 Electric Terminals (Triple Layered) |
| Fuse Boxes - Halogen Free (H.F) Surface Mount | |
| 01 36 00 00 000 002 | Surface Mount Fuse Box with 2 H.F |
| 01 36 00 00 000 006 | Surface Mount Fuse Box with 6 H.F |
| 01 36 00 00 000 009 | Surface Mount Fuse Box with 9 H.F |
| 01 36 00 00 000 012 | Surface Mount Fuse Box with 12 H.F |
| 01 36 00 00 000 016 | Surface Mount Fuse Box with 16 H.F |
| 01 36 00 00 042 016 | Surface Mount Fuse Box with 16 H.F (Double Layered) |
| 01 36 00 00 000 024 | Surface Mount Fuse Box with 24 H.F |
| 01 36 00 00 043 036 | Surface Mount Fuse Box with 36 H.F (Triple Layered) |



Electric Terminal

| | |
|---------------------|----------------------------|
| 01 36 00 00 001 001 | 4 Holed Electric Terminal |
| 01 36 00 00 001 002 | 6 Holed Electric Terminal |
| 01 36 00 00 001 003 | 9 Holed Electric Terminal |
| 01 36 00 00 001 007 | 12 Holed Electric Terminal |



FUSE BOXES