

OTDR Report

General Information

Filename: Fiber01.rd.trc Cable ID: DR.NO.1508679-0008
 Test date: 07/09/2015 Fiber ID: 4 FO SM SLT SA SJ
 Test time: 01:24 (GMT+02:00) Customer: CASTEL DISTRIBUTION
 Job ID: Company: ETK CABLE

Comments:

Location A

Location:
 Operator:
 Unit model: FTB-7200D-023B-EI
 Unit s/n: 456728

Location B

Location:
 Operator:

Calibration date:

Results

Span length: 2.0953 km Average splice loss:
 Span loss: 0.720 dB Maximum splice loss:
 Average loss: 0.344 dB/km Span ORL: 29.46 dB

Test Parameters

Wavelength: 1310 nm (9 μm) Duration: 5 s
 Range: 5.0000 km High resolution: No
 Pulse: 30 ns Resolution: 0.319 m

Test Settings

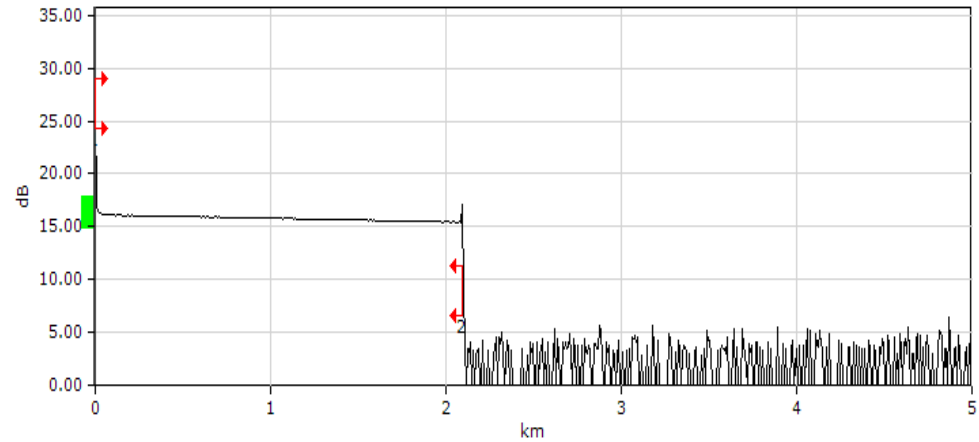
IOR: 1.467700 Splice loss threshold: 0.020 dB
 Backscatter: -79.44 dB Reflectance threshold: -72.0 dB
 Helix factor: 0.00 % End-of-fiber threshold: 5.000 dB

Markers Information

A: 0.0000 km, 18.442 dB B: 0.0083 km, 17.349 dB
 a: 0.0000 km, 18.442 dB b: 1.0079 km, 15.828 dB
 B-A: 0.0083 km, 1.094 dB

Manual Measurements

4-pt. ev. loss: 2.262 dB A-B LSA att.: 1,865.346 dB/km
 A-B LSA loss: 15.479 dB 3-pt. reflectance: -66.0 dB
 2-pt. sect. att.: ***** A-B ORL: 30.31 dB



Event Table

Type	No	Location/Length (km)	Loss (dB)	Reflection (dB)	Attenuation (dB / km)	Cumul. (dB)
Launch Level	1	0.0000		-30.3		0.000
Section		2.0953	0.720		0.344	0.720
Reflective Event	2	2.0953		-53.8		0.720

OTDR Report

General Information

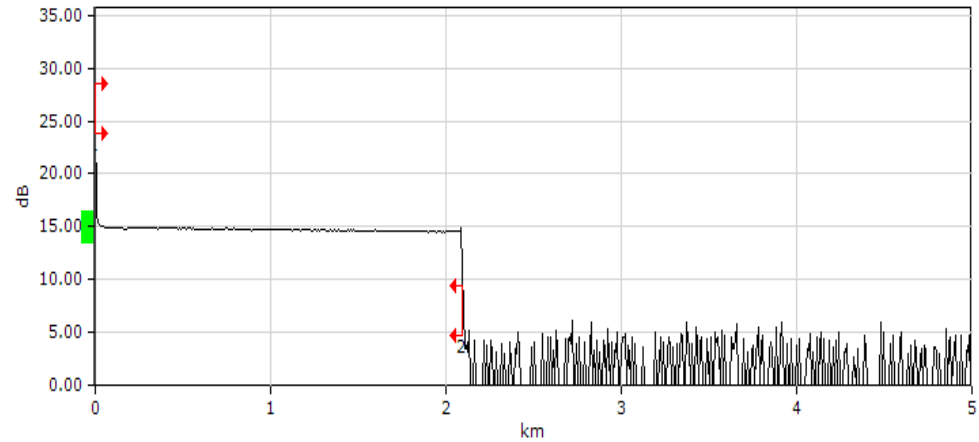
Filename: Fiber01.rd.trc Cable ID: DR.NO.1508679-0008
 Test date: 07/09/2015 Fiber ID: 4 FO SM SLT SA SJ
 Test time: 01:24 (GMT+02:00) Customer: CASTEL DISTRIBUTION
 Job ID: Company: ETK CABLE
 Comments:

Location A

Location:
 Operator:
 Unit model: FTB-7200D-023B-EI
 Unit s/n: 456728
 Calibration date:

Location B

Location:
 Operator:



Results

Span length: 2.0953 km Average splice loss:
 Span loss: 0.424 dB Maximum splice loss:
 Average loss: 0.202 dB/km Span ORL: 30.58 dB

Test Parameters

Wavelength: 1550 nm (9 μm) Duration: 5 s
 Range: 5.0000 km High resolution: No
 Pulse: 30 ns Resolution: 0.319 m

Test Settings

IOR: 1.468325 Splice loss threshold: 0.020 dB
 Backscatter: -81.87 dB Reflectance threshold: -72.0 dB
 Helix factor: 0.00 % End-of-fiber threshold: 5.000 dB

Markers Information

A: 0.0000 km, 17.410 dB B: 0.0083 km, 16.707 dB
 a: 0.0000 km, 17.410 dB b: 1.0078 km, 14.875 dB
 B-A: 0.0083 km, 0.703 dB

Manual Measurements

4-pt. ev. loss: 2.418 dB A-B LSA att.: 1,858.402 dB/km
 A-B LSA loss: 15.415 dB 3-pt. reflectance: -66.1 dB
 2-pt. sect. att.: 84.770 dB/km A-B ORL: 31.23 dB

Event Table

Type	No	Location/Length (km)	Loss (dB)	Reflection (dB)	Attenuation (dB / km)	Cumul. (dB)
Launch Level	1	0.0000		-31.2		0.000
Section		2.0953	0.424		0.202	0.424
Reflective Event	2	2.0953		-64.7		0.424

OTDR Report

General Information

Filename: Fiber02.yl.trc Cable ID: DR.NO.1508679-0008
 Test date: 07/09/2015 Fiber ID: 4 FO SM SLT SA SJ
 Test time: 01:36 (GMT+02:00) Customer: CASTEL DISTRIBUTION
 Job ID: Company: ETK CABLE

Comments:

Location A

Location:
 Operator:
 Unit model: FTB-7200D-023B-EI
 Unit s/n: 456728

Location B

Location:
 Operator:

Calibration date:

Results

Span length: 2.0959 km Average splice loss:
 Span loss: 0.690 dB Maximum splice loss:
 Average loss: 0.329 dB/km Span ORL: 25.73 dB

Test Parameters

Wavelength: 1310 nm (9 μm) Duration: 5 s
 Range: 5.0000 km High resolution: No
 Pulse: 30 ns Resolution: 0.319 m

Test Settings

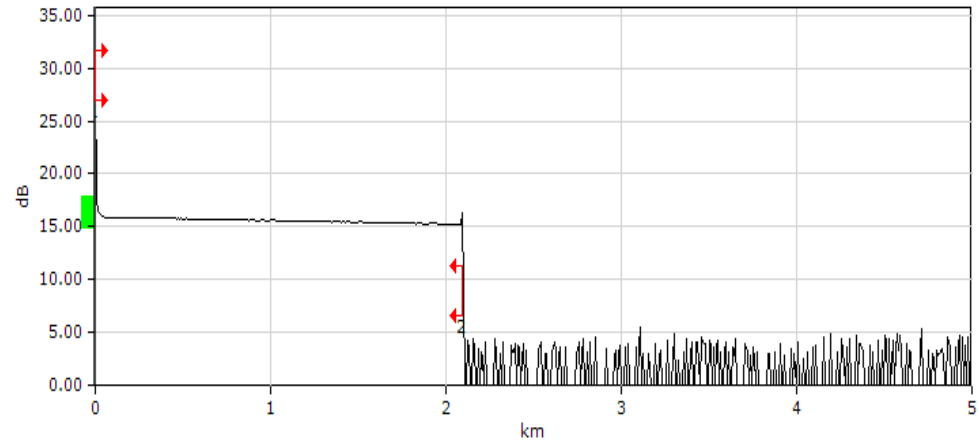
IOR: 1.467700 Splice loss threshold: 0.020 dB
 Backscatter: -79.44 dB Reflectance threshold: -72.0 dB
 Helix factor: 0.00 % End-of-fiber threshold: 5.000 dB

Markers Information

A: 0.0000 km, 18.412 dB B: 0.0083 km, 17.987 dB
 a: 0.0000 km, 18.412 dB b: 1.0079 km, 15.563 dB
 B-A: 0.0083 km, 0.425 dB

Manual Measurements

4-pt. ev. loss: 2.419 dB A-B LSA att.: 1,455.825 dB/km
 A-B LSA loss: 12.081 dB 3-pt. reflectance: -62.7 dB
 2-pt. sect. att.: 51.193 dB/km A-B ORL: 26.07 dB



Event Table

Type	No	Location/Length (km)	Loss (dB)	Reflection (dB)	Attenuation (dB / km)	Cumul. (dB)
Launch Level	1	0.0000		-26.1		0.000
Section		2.0959	0.690		0.329	0.690
Reflective Event	2	2.0959		-55.1		0.690

OTDR Report

General Information

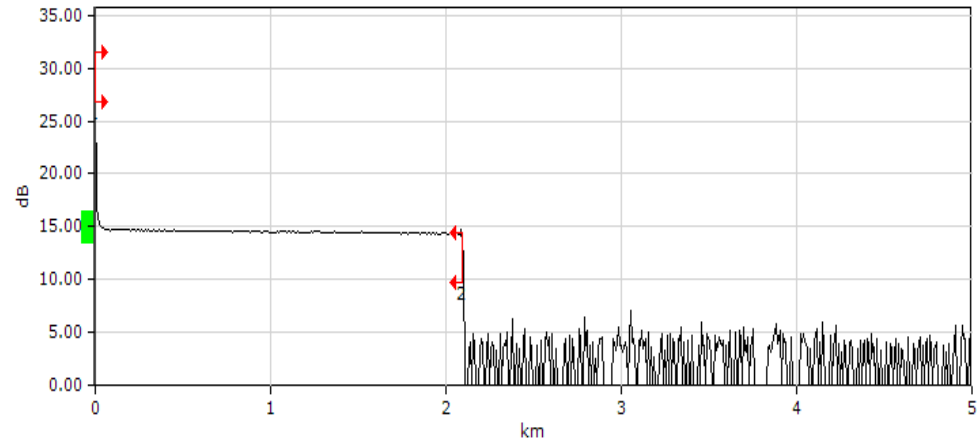
Filename: Fiber02.yl.trc Cable ID: DR.NO.1508679-0008
 Test date: 07/09/2015 Fiber ID: 4 FO SM SLT SA SJ
 Test time: 01:36 (GMT+02:00) Customer: CASTEL DISTRIBUTION
 Job ID: Company: ETK CABLE
 Comments:

Location A

Location:
 Operator:
 Unit model: FTB-7200D-023B-EI
 Unit s/n: 456728
 Calibration date:

Location B

Location:
 Operator:



Results

Span length: 2.0960 km Average splice loss:
 Span loss: 0.402 dB Maximum splice loss:
 Average loss: 0.192 dB/km Span ORL: 26.19 dB

Test Parameters

Wavelength: 1550 nm (9 μm) Duration: 5 s
 Range: 5.0000 km High resolution: No
 Pulse: 30 ns Resolution: 0.319 m

Test Settings

IOR: 1.468325 Splice loss threshold: 0.020 dB
 Backscatter: -81.87 dB Reflectance threshold: -72.0 dB
 Helix factor: 0.00 % End-of-fiber threshold: 5.000 dB

Markers Information

A: 0.0000 km, 17.361 dB B: 0.0083 km, 17.640 dB
 a: 0.0000 km, 17.361 dB b: 1.0078 km, 14.423 dB
 B-A: 0.0083 km, -0.278 dB

Manual Measurements

4-pt. ev. loss: 2.493 dB A-B LSA att.: 1,381.499 dB/km
 A-B LSA loss: 11.459 dB 3-pt. reflectance: -62.6 dB
 2-pt. sect. att.: -33.555 dB/km A-B ORL: 26.42 dB

Event Table

Type	No	Location/Length (km)	Loss (dB)	Reflection (dB)	Attenuation (dB / km)	Cumul. (dB)
Launch Level	1	0.0000		-26.4		0.000
Section		2.0960	0.402		0.192	0.402
Reflective Event	2	2.0960		-56.9		0.402

OTDR Report

General Information

Filename: Fiber03.gr.trc Cable ID: DR.NO.1508679-0008
 Test date: 07/09/2015 Fiber ID: 4 FO SM SLT SA SJ
 Test time: 01:36 (GMT+02:00) Customer: CASTEL DISTRIBUTION
 Job ID: Company: ETK CABLE

Comments:

Location A

Location:
 Operator:
 Unit model: FTB-7200D-023B-EI
 Unit s/n: 456728

Location B

Location:
 Operator:

Calibration date:

Results

Span length: 2.0959 km Average splice loss:
 Span loss: 0.686 dB Maximum splice loss:
 Average loss: 0.327 dB/km Span ORL: 25.25 dB

Test Parameters

Wavelength: 1310 nm (9 μm) Duration: 5 s
 Range: 5.0000 km High resolution: No
 Pulse: 30 ns Resolution: 0.319 m

Test Settings

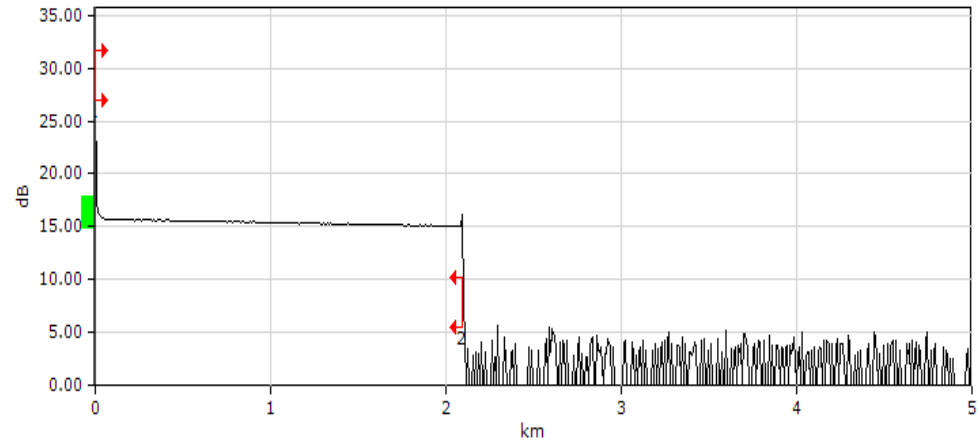
IOR: 1.467700 Splice loss threshold: 0.020 dB
 Backscatter: -79.44 dB Reflectance threshold: -72.0 dB
 Helix factor: 0.00 % End-of-fiber threshold: 5.000 dB

Markers Information

A: 0.0000 km, 18.397 dB B: 0.0083 km, 17.933 dB
 a: 0.0000 km, 18.397 dB b: 1.0079 km, 15.339 dB
 B-A: 0.0083 km, 0.465 dB

Manual Measurements

4-pt. ev. loss: 2.592 dB A-B LSA att.: 1,456.434 dB/km
 A-B LSA loss: 12.086 dB 3-pt. reflectance: -62.2 dB
 2-pt. sect. att.: 56.018 dB/km A-B ORL: 25.56 dB



Event Table

Type	No	Location/Length (km)	Loss (dB)	Reflection (dB)	Attenuation (dB / km)	Cumul. (dB)
Launch Level	1	0.0000		-25.6		0.000
Section		2.0959	0.686		0.327	0.686
Reflective Event	2	2.0959		-55.1		0.686

OTDR Report

General Information

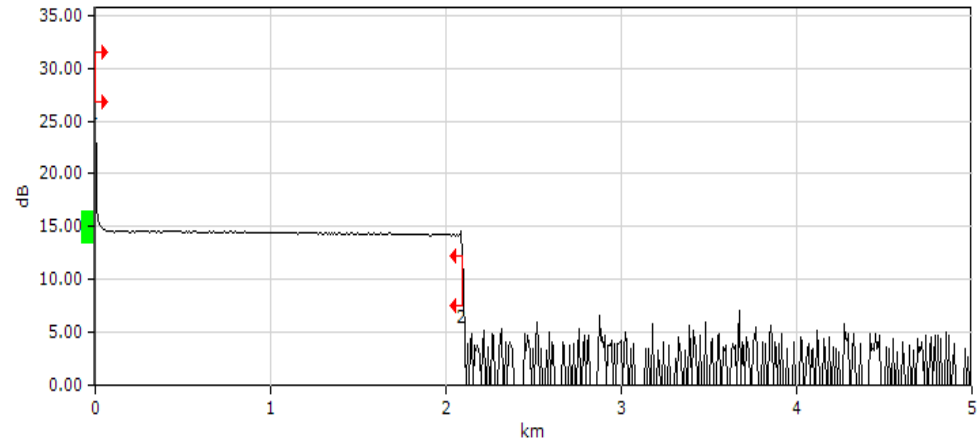
Filename: Fiber03.gr.trc Cable ID: DR.NO.1508679-0008
 Test date: 07/09/2015 Fiber ID: 4 FO SM SLT SA SJ
 Test time: 01:36 (GMT+02:00) Customer: CASTEL DISTRIBUTION
 Job ID: Company: ETK CABLE
 Comments:

Location A

Location:
 Operator:
 Unit model: FTB-7200D-023B-EI
 Unit s/n: 456728
 Calibration date:

Location B

Location:
 Operator:



Results

Span length: 2.0960 km Average splice loss:
 Span loss: 0.410 dB Maximum splice loss:
 Average loss: 0.196 dB/km Span ORL: 25.87 dB

Test Parameters

Wavelength: 1550 nm (9 μm) Duration: 5 s
 Range: 5.0000 km High resolution: No
 Pulse: 30 ns Resolution: 0.319 m

Test Settings

IOR: 1.468325 Splice loss threshold: 0.020 dB
 Backscatter: -81.87 dB Reflectance threshold: -72.0 dB
 Helix factor: 0.00 % End-of-fiber threshold: 5.000 dB

Markers Information

A: 0.0000 km, 17.372 dB B: 0.0083 km, 17.702 dB
 a: 0.0000 km, 17.372 dB b: 1.0078 km, 14.419 dB
 B-A: 0.0083 km, -0.330 dB

Manual Measurements

4-pt. ev. loss: 2.621 dB A-B LSA att.: 1,379.270 dB/km
 A-B LSA loss: 11.440 dB 3-pt. reflectance: -62.2 dB
 2-pt. sect. att.: -39.795 dB/km A-B ORL: 26.08 dB

Event Table

Type	No	Location/Length (km)	Loss (dB)	Reflection (dB)	Attenuation (dB / km)	Cumul. (dB)
Launch Level	1	0.0000		-26.1		0.000
Section		2.0960	0.410		0.196	0.410
Reflective Event	2	2.0960		-56.9		0.410

OTDR Report

General Information

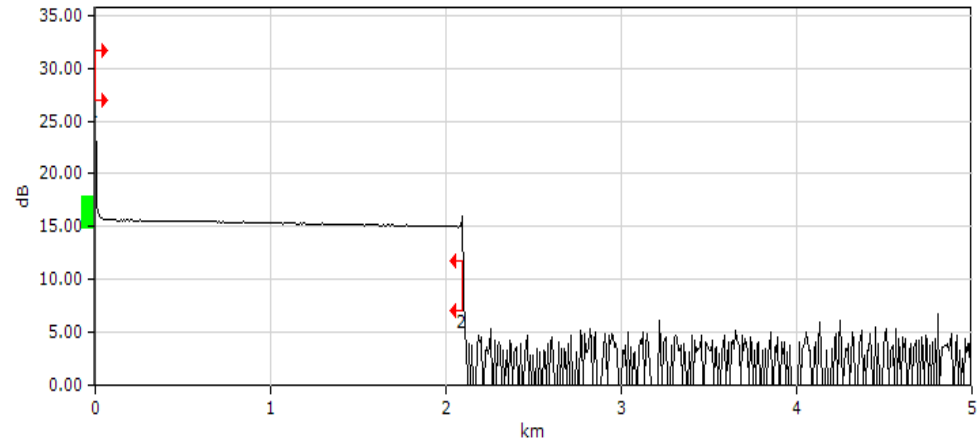
Filename: Fiber04.nt.trc Cable ID: DR.NO.1508679-0008
 Test date: 07/09/2015 Fiber ID: 4 FO SM SLT SA SJ
 Test time: 01:37 (GMT+02:00) Customer: CASTEL DISTRIBUTION
 Job ID: Company: ETK CABLE
 Comments:

Location A

Location:
 Operator:
 Unit model: FTB-7200D-023B-EI
 Unit s/n: 456728
 Calibration date:

Location B

Location:
 Operator:



Results

Span length: 2.0959 km Average splice loss:
 Span loss: 0.690 dB Maximum splice loss:
 Average loss: 0.329 dB/km Span ORL: 25.31 dB

Test Parameters

Wavelength: 1310 nm (9 μm) Duration: 5 s
 Range: 5.0000 km High resolution: No
 Pulse: 30 ns Resolution: 0.319 m

Test Settings

IOR: 1.467700 Splice loss threshold: 0.020 dB
 Backscatter: -79.44 dB Reflectance threshold: -72.0 dB
 Helix factor: 0.00 % End-of-fiber threshold: 5.000 dB

Markers Information

A: 0.0000 km, 18.346 dB B: 0.0083 km, 17.915 dB
 a: 0.0000 km, 18.346 dB b: 1.0079 km, 15.402 dB
 B-A: 0.0083 km, 0.431 dB

Manual Measurements

4-pt. ev. loss: 2.585 dB A-B LSA att.: 1,458.143 dB/km
 A-B LSA loss: 12.100 dB 3-pt. reflectance: -62.1 dB
 2-pt. sect. att.: 51.899 dB/km A-B ORL: 25.62 dB

Event Table

Type	No	Location/Length (km)	Loss (dB)	Reflection (dB)	Attenuation (dB / km)	Cumul. (dB)
Launch Level	1	0.0000		-25.7		0.000
Section		2.0959	0.690		0.329	0.690
Reflective Event	2	2.0959		-54.8		0.690

OTDR Report

General Information

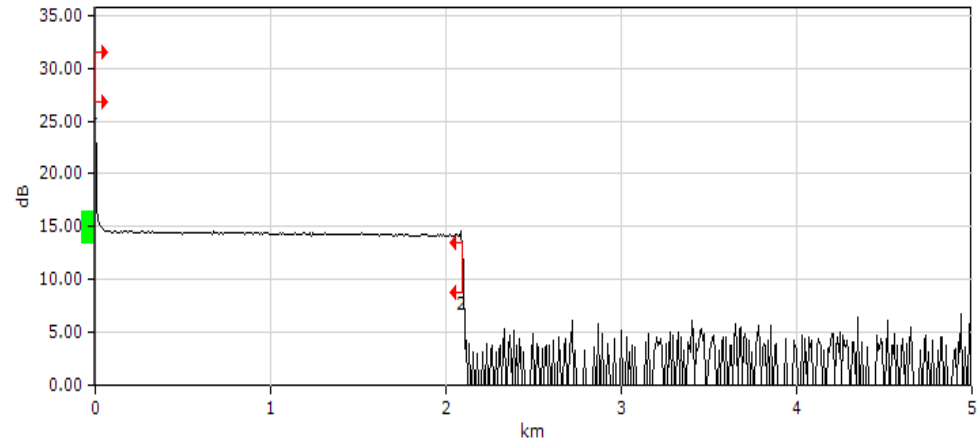
Filename: Fiber04.nt.trc Cable ID: DR.NO.1508679-0008
 Test date: 07/09/2015 Fiber ID: 4 FO SM SLT SA SJ
 Test time: 01:37 (GMT+02:00) Customer: CASTEL DISTRIBUTION
 Job ID: Company: ETK CABLE
 Comments:

Location A

Location:
 Operator:
 Unit model: FTB-7200D-023B-EI
 Unit s/n: 456728
 Calibration date:

Location B

Location:
 Operator:



Results

Span length: 2.0960 km Average splice loss:
 Span loss: 0.400 dB Maximum splice loss:
 Average loss: 0.191 dB/km Span ORL: 25.85 dB

Test Parameters

Wavelength: 1550 nm (9 μm) Duration: 5 s
 Range: 5.0000 km High resolution: No
 Pulse: 30 ns Resolution: 0.319 m

Test Settings

IOR: 1.468325 Splice loss threshold: 0.020 dB
 Backscatter: -81.87 dB Reflectance threshold: -72.0 dB
 Helix factor: 0.00 % End-of-fiber threshold: 5.000 dB

Markers Information

A: 0.0000 km, 17.316 dB B: 0.0083 km, 17.631 dB
 a: 0.0000 km, 17.316 dB b: 1.0078 km, 14.155 dB
 B-A: 0.0083 km, -0.314 dB

Manual Measurements

4-pt. ev. loss: 2.621 dB A-B LSA att.: 1,383.981 dB/km
 A-B LSA loss: 11.479 dB 3-pt. reflectance: -62.2 dB
 2-pt. sect. att.: -37.911 dB/km A-B ORL: 26.07 dB

Event Table

Type	No	Location/Length (km)	Loss (dB)	Reflection (dB)	Attenuation (dB / km)	Cumul. (dB)
Launch Level	1	0.0000		-26.1		0.000
Section		2.0960	0.400		0.191	0.400
Reflective Event	2	2.0960		-56.6		0.400